

# TFT display C6 and C7



## hardware manual

# Technical data

---

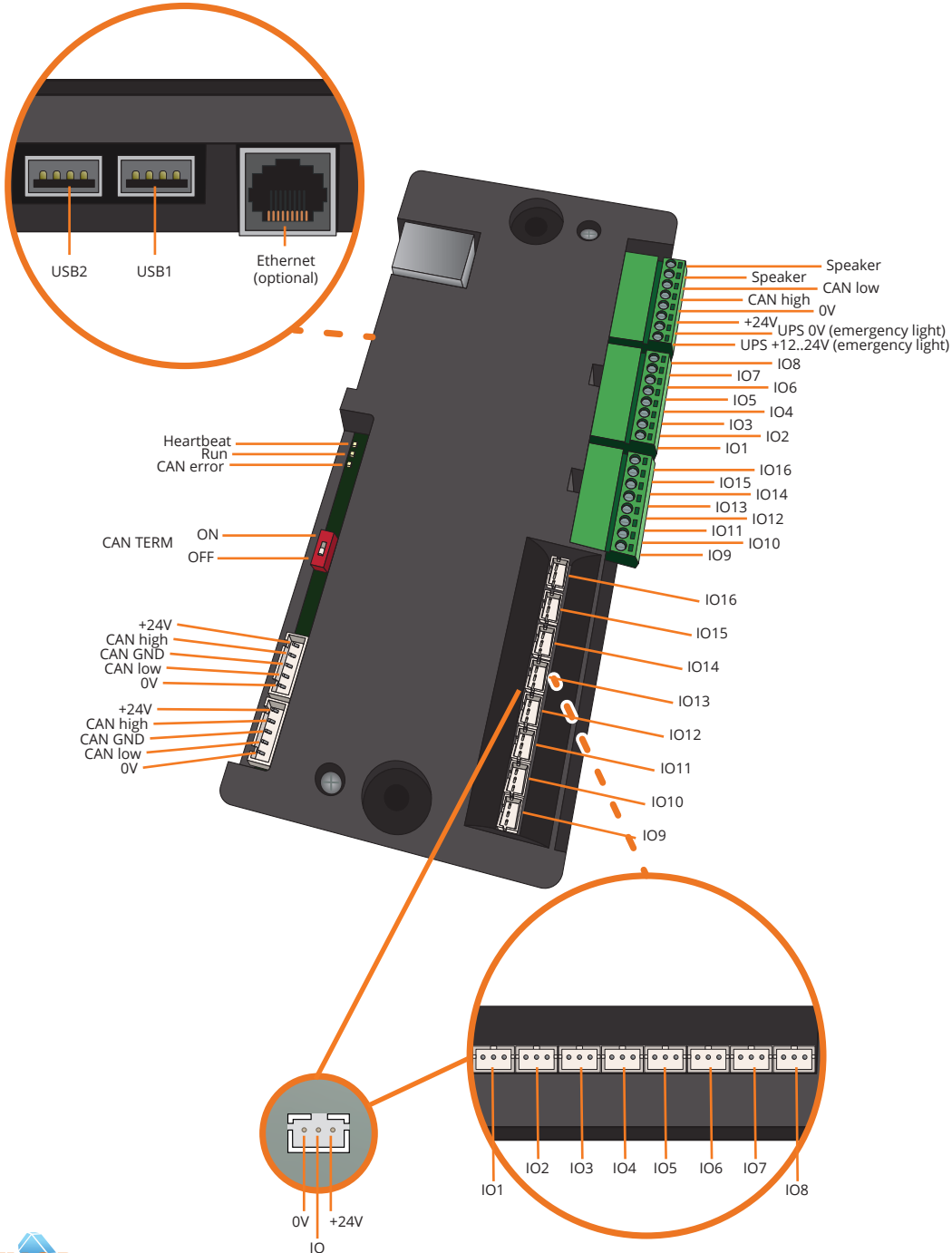
<b>Loudspeaker:</b>	8 ohm, 1-3 W
<b>Interface:</b>	Parallel interface, CiA417, Capacitive multi-touch glass
<b>Display:</b>	C6: 5.5 inch, 960x480 pixels, 24 bit color depth C7: 7 inch, 1024x600 pixels, 24 bit color depth
<b>Supply voltage:</b>	20-28 VDC
<b>Supply current:</b>	24VDC typical 30 mA, maximum 120 mA
<b>Inputs and outputs:</b>	16 IO
<b>Input voltage:</b>	20-28 VDC
<b>Input current:</b>	3.1 mA to 4.2 mA, @24VDC 3.5 mA
<b>Output current:</b>	max 500 mA (PTC protected)
<b>Emergency light current:</b>	30 mA
<b>Article number:</b>	C6: 1000021 C7: 1000022

# Table of content

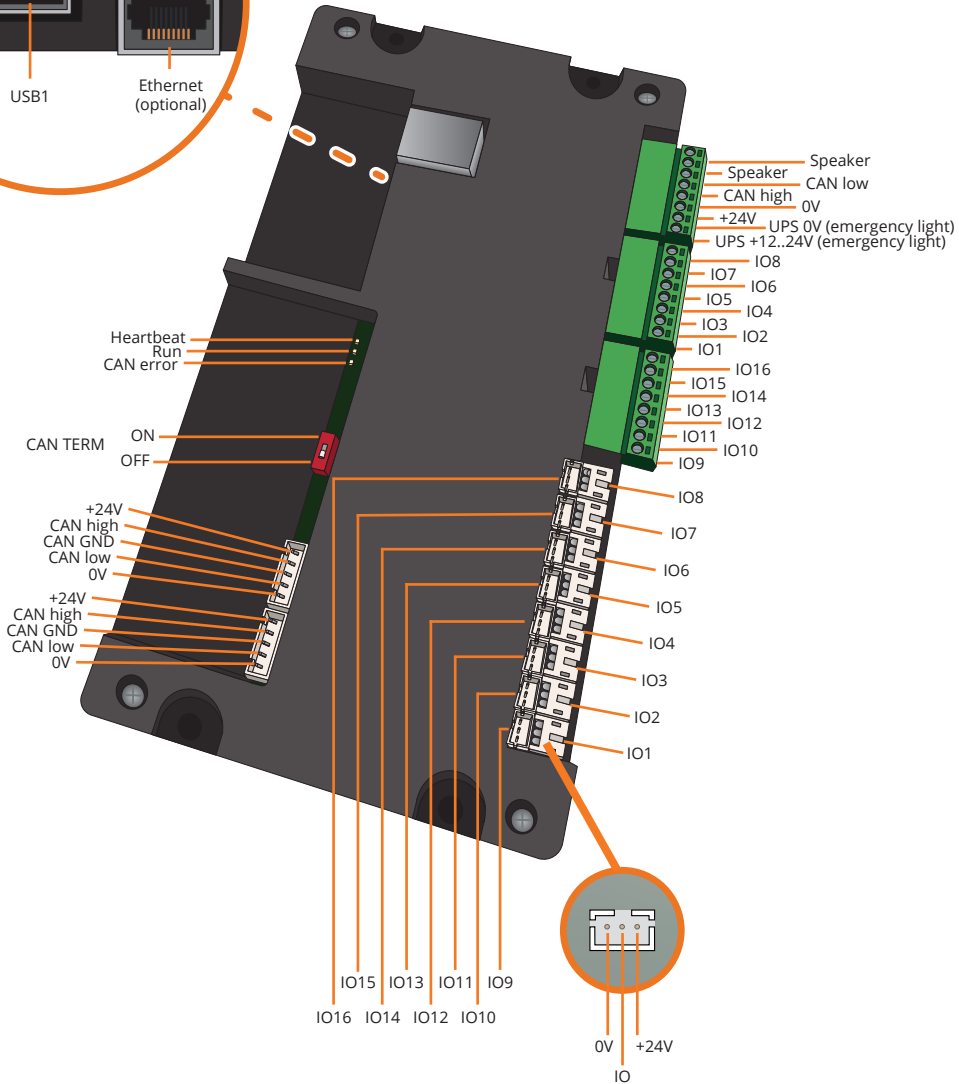
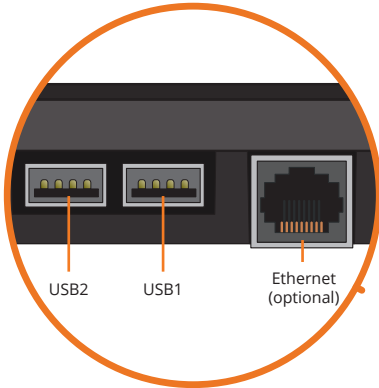
---

Technical data	2
Wiring diagram C6	4
Wiring diagram C7	5
Measurements C6	6
Measurements C7	6
C6 front plate drawing	7
C7 front plate drawing	7
General information	8
Safety information	8
Incident and issue reporting procedure	9
Incident report flow chart	10
Safely updating the device firmware	11

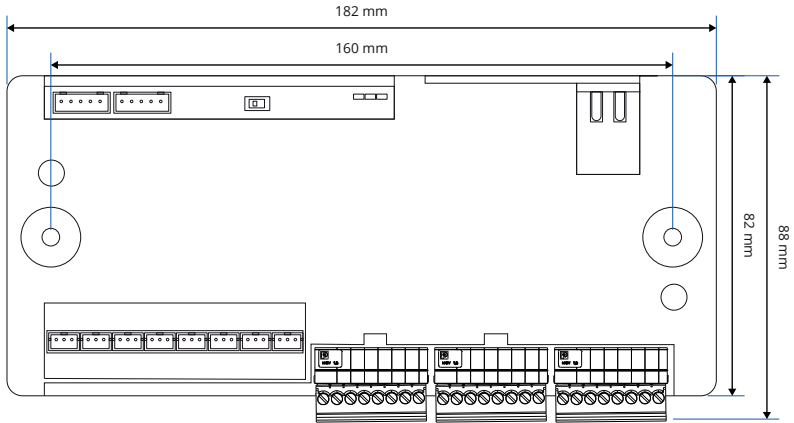
# Wiring diagram C6



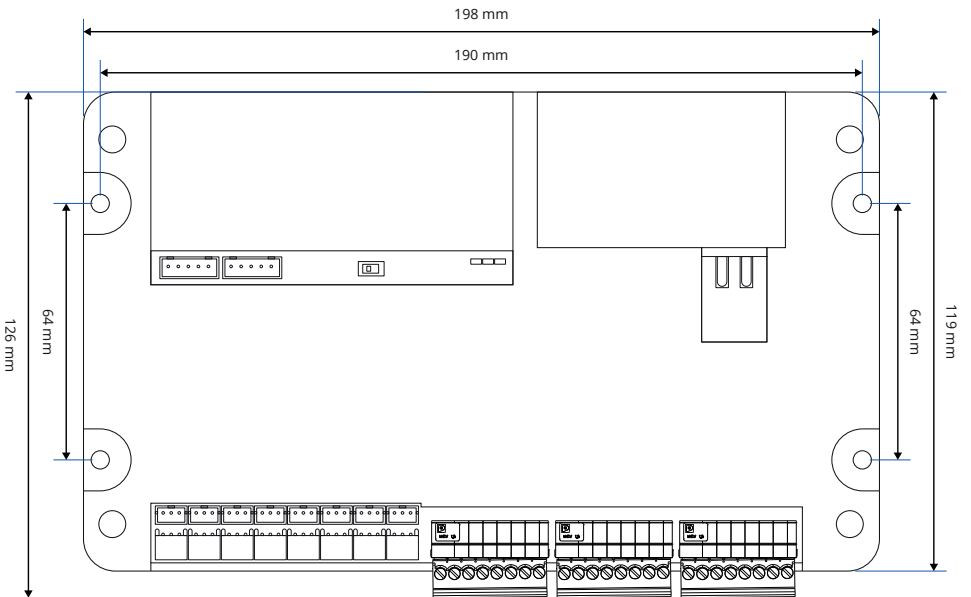
# Wiring diagram C7



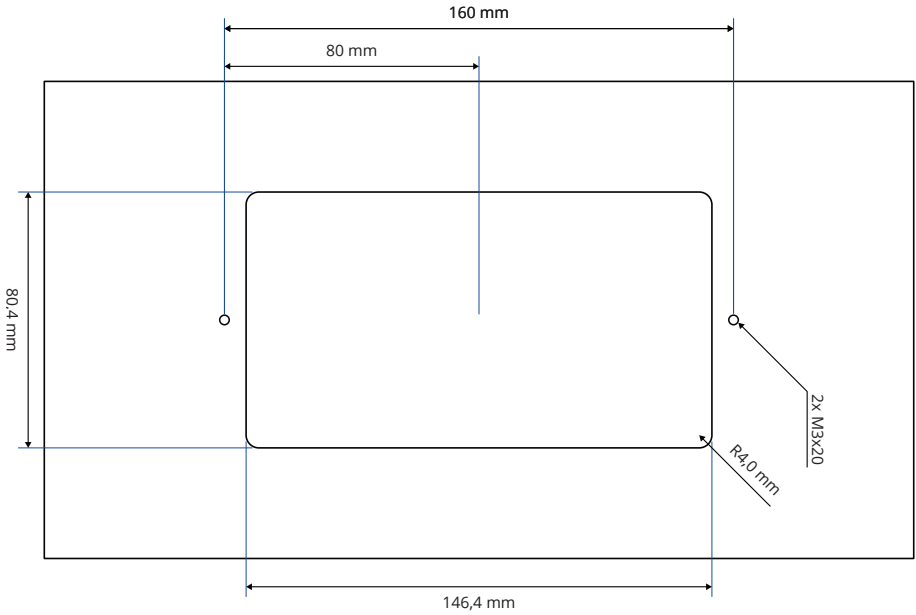
# Measurements C6



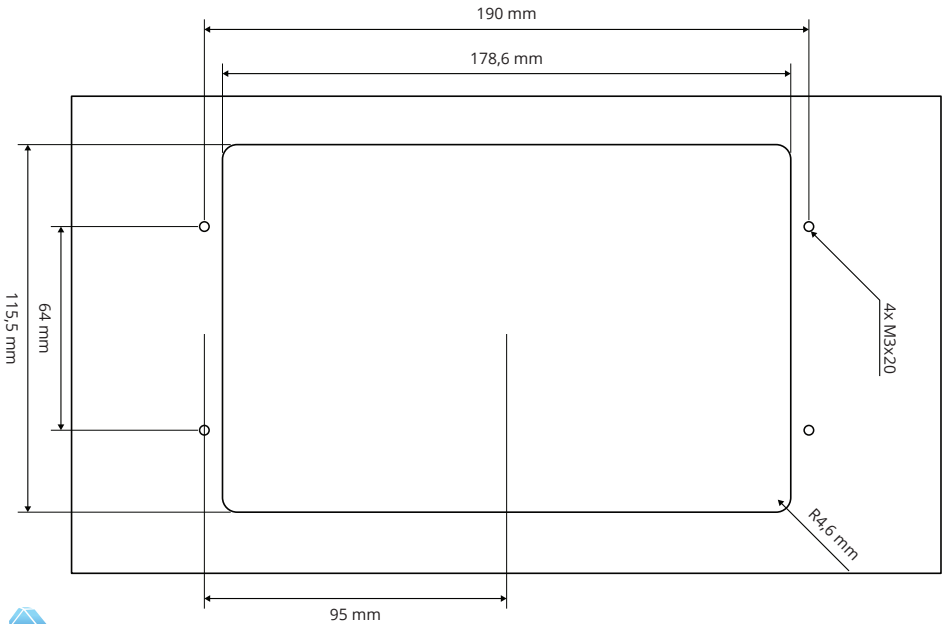
# Measurements C7



# C6 front plate drawing



# C7 front plate drawing



# General information

---

## Decommissioning

Before disposing of the device, it should be reset to factory settings to ensure that any sensitive or identifiable information is removed. Personal data is generally not stored on the unit, so additional erasure is typically not required. Once reset, the unit must be disposed of properly in accordance with local regulations.

If the device was equipped with a USB device for data backup or voice announcement messages, the USB device must be securely erased (formatted) before disposal. It should then be discarded in compliance with the Electronic Waste Ordinance. For secure data destruction, the DIN 66399 standard (Office and Data Technology – Destruction of Data Carriers) should be followed.

## Packaging and disposal

The display is covered with protective foil and other materials to safeguard it during transport.

- » Keep all packaging materials away from children.
- » This device must not be disposed of with household waste.
- » When decommissioning, the display and its components should be taken to a designated electronic waste collection point for proper recycling, in accordance with the Electronic Waste Ordinance.
- » Packaging materials should be recycled at an appropriate recycling center.

Before recycling the unit, consider whether the display or its components can be reused or resold. Selling the unit via classified ads or online marketplaces may be an option. Reuse is always preferable to recycling.

# Safety information

---

## Liability

Thor Parts AB or any of its collaboration partners is not liable with respect to the buyer of this product or to any third parties for damage, loss, costs or work incurred as a result of accidents, misuse of the product, incorrect installation or illegal changes, repairs or additions. Claims under warranty are likewise excluded in such cases. Thor Parts AB accepts no liability arising from printing errors, mistakes or changes.

## Safety Precautions!

- » Only trained professionals, that are authorised to work on the equipment, should install, configure and use this product.
- » This product is intended for the elevator industry. It has been designed and manufactured to be used for its specified purpose only. It must not be used for any other purpose without the producer's consent.
- » The product cannot be modified or altered in any way and should only be installed and configured strictly following the procedures described in this manual.
- » All applicable health and safety requirements and equipment standards must be considered and strictly adhered to, when installing and configuring this product.
- » After installing and configuring this product, the operation of the equipment should be fully tested to ensure correct operation, before the equipment is returned to normal use.

# Incident and issue reporting procedure

In the event of an incident, it is crucial that Thor Parts AB follows a structured procedure for responding. Bug reports, errors, security concerns, issues, and incident reports can be submitted to us via the incident report form on our website.

Submitted reports must be clear, complete, and concise. The form includes several required fields, such as:

- The name of the person submitting the report
- The identification number of the unit/controller
- A valid email address
- Sufficient information to verify and assess the incident

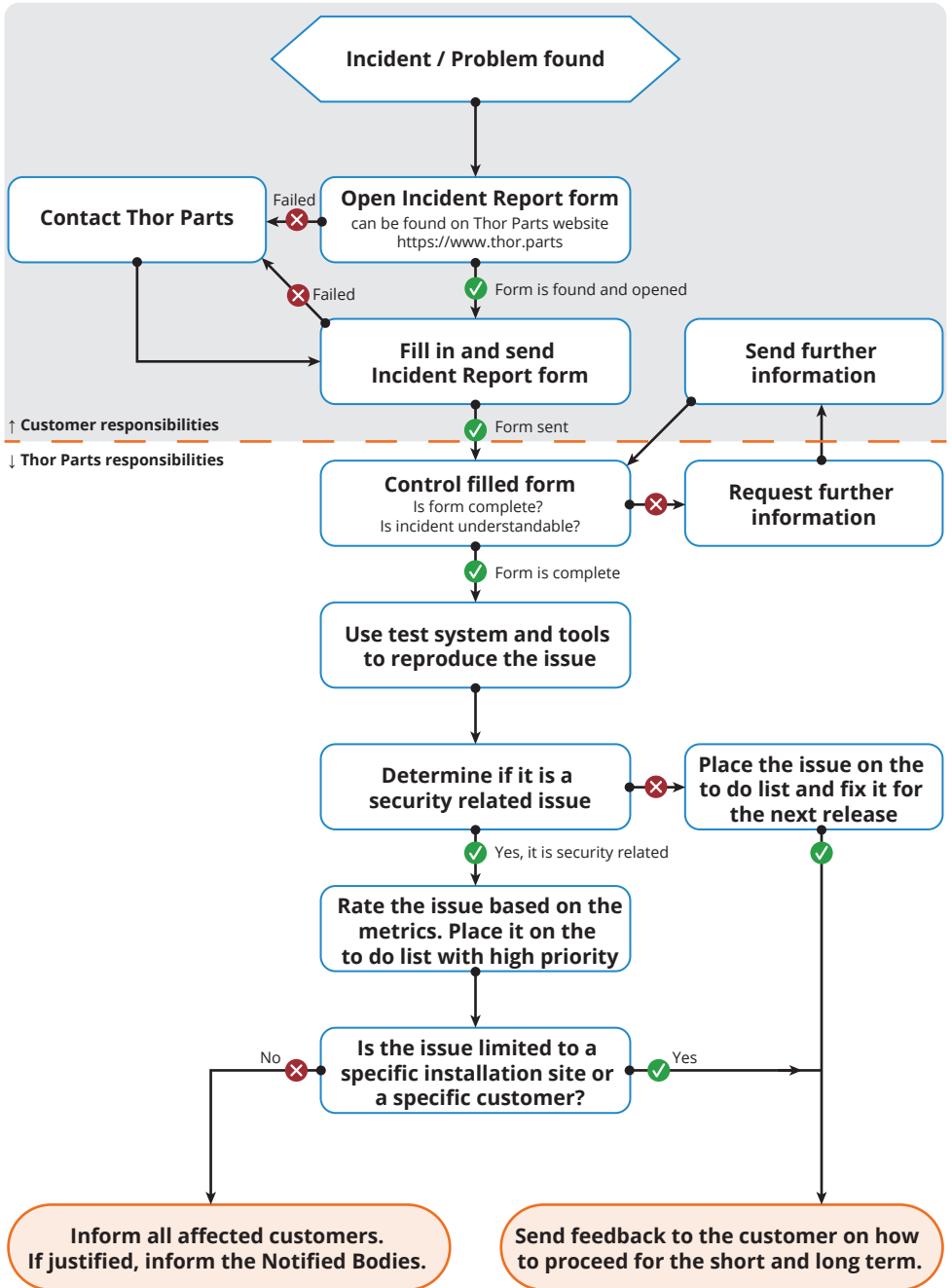
Please ensure that the incident is described in detail, including steps to reproduce the issue if applicable.

The incident report serves as documentation for any event that has caused or could potentially cause a functional or security issue with the product. It captures what has happened and typically includes the steps required to replicate the issue.

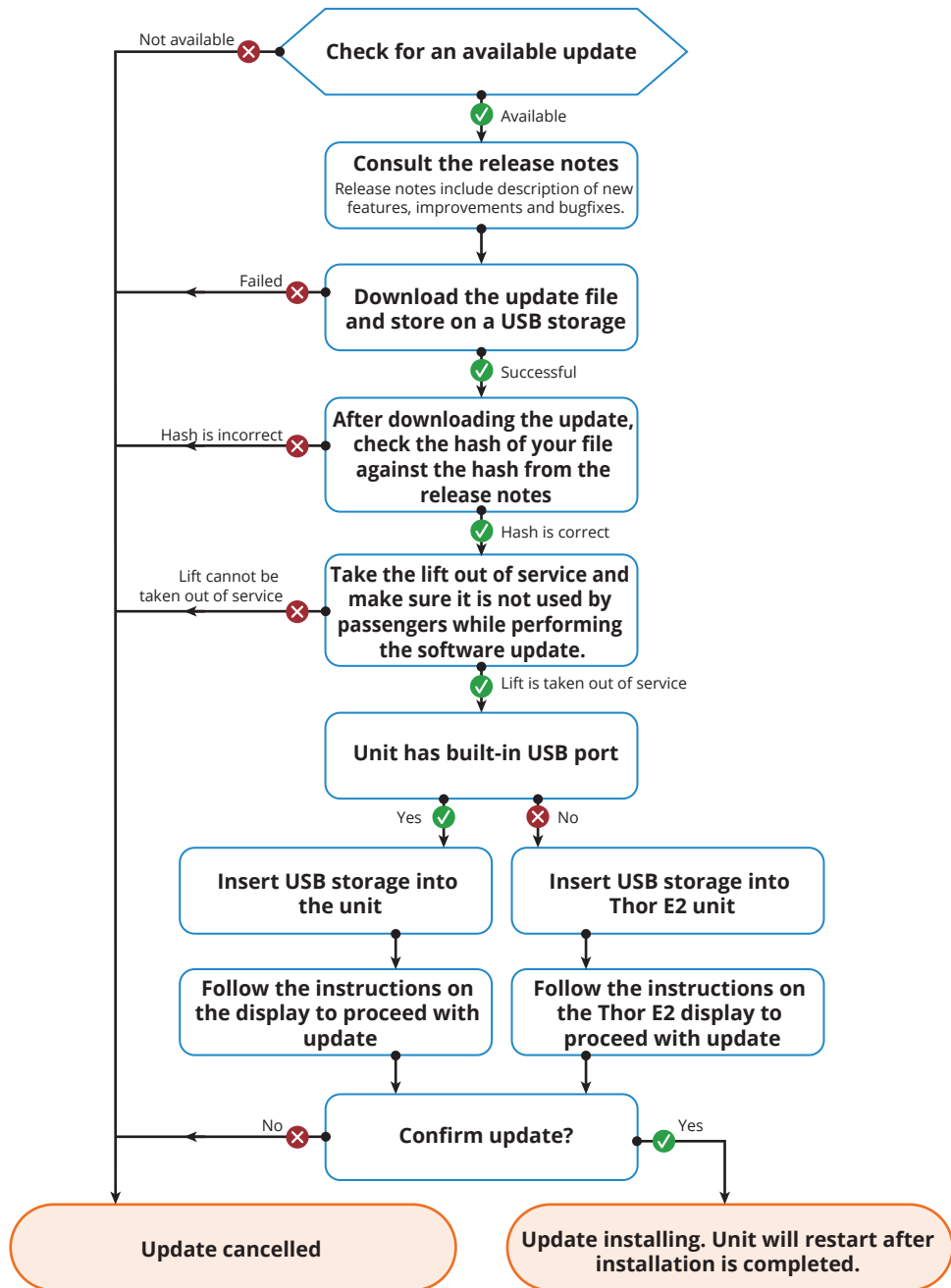
The below RACI diagram shows the responsibilities for handling incident reports within the Thor Parts AB organization as of the publishing of this manual.

	Lars Gustafsson	Tommy Nettelstad
<b>R - Responsible</b> <b>C - Consulted</b> <b>I - Informed</b>		
Customer contact (START)	I	R
Gathering details (CREATE)	R	C
Checking/Validating (TO DO)	R	C
Creating test case (IMPLEMENTATION)	R	
Fixing issue (IMPLEMENTATION)	R	
Testing solution (TEST/REVIEW)	R	
Update documentation (REVIEW)	R	C
Notify customer (RELEASE)	I	R

# Incident report flow chart



# Safely updating the device firmware



## Contact us:



Thor Parts AB  
Antennvägen 10  
135 48 Tyresö  
Sweden

Telephone: +46 (0)8-555 020 40  
E-mail: sales@thor.parts

**[www.thor.parts](http://www.thor.parts)**